

MET's Institute of Management,  
Bhujbal Knowledge City, Nashik  
NAAC – Self Study Report

### 7.3.1 Institutional Distinctiveness Best Practices

Institution like to be recognized of its attributes, which make it distinct with one of its kinds. Such Attributes characterize the Institution and are reflected in all its activities in focus & Practice. Institute are usually the benchmark it wishes to set for itself and others in the society.

Being an institute of higher learning, we realize our role in building a society free from discrimination and deprivation. We also realize that in a nation endowed with youth power we are facing an acute shortage of skilled youth who are industry employable. In order to fulfill our role, we are engage in various tasks, which can be labeled as Best Practices. Fostering Community Responsibility, Skill Development Program, Promoting Gender Equality, Spreading Legal awareness etc. are few of the best practices of the college.

The institute right from its inception is functioning with one of the objectives of serving humanity and uplifting the deprived section of society. Promoters were inspired by ideology promoted by Mahatma Jyotiba Phule and Savitribai phule.

विद्येविनामतीगेली।मतिविनानीतीगेली।  
नीतिविनागतीगेली।गतिविनावित्तगेले।  
वित्ताविनाशूद्रखचले।इतकेअनर्थएकाअविद्येनेकेले।। - महात्माजोतिबाफुले

*Lack of knowledge leads to indiscretion ;*

*Indiscretion leads to lack of ethics.*

*Lack of ethics leads to absence of direction and momentum;*

*Absence of direction and momentum results in bankruptcy.*

*Such is the havoc caused by the lack of knowledge.- Mahatma Jyotiba Phule*

Promoters believe that education is only way to uplift the society.The vision of the trust and the institute focusses on overall development of stakeholders while creating sense of responsibility towards the society. Marching towards the vision the corporate social responsibility cell, MET-SEVA, was established.

The main purpose behind this was to create a sense of responsibility and instilling sensitivity amongst the students and other stakeholders towards community development. The CSR cell was established with the following objectives:

- To instill a sense of social responsibility in the minds of the students
- To engage the students in meaningful service that meets community needs



MET's Institute of Management,  
Bhujbal Knowledge City, Nashik  
NAAC – Self Study Report

- To equip the students with skills, attitude and knowledge so that they can work for the deprived sections of society.

Under MET-SEVA Institute tries to help underprivileged strata of society by providing them support through various activities. The root cause of poverty is unemployment, underemployment and lack of educational opportunities. Institute is trying to identify their skills and provide training to sharpen them so that they can earn a decent amount to prevent their migration to cities. Hence, revival of tribal arts and providing livelihood to tribals is one of the various activities under MET Seva.

The objective of MET Seva is to create institutional architecture that is both enabling and empowering for the poor to access better livelihoods and improve their standards of living through identifying and implementing innovative programmes.

With the help of students institute is identifying, supporting and promoting innovations and scalable interventions for empowering the underprivileged. Institute plan is to create an ecosystem for social entrepreneurship and encourage sustainable, scalable and measurable livelihoods so that the problem of poverty and underemployment can be addressed with minimum capital requirement and maximum impact.

Projects undertaken by MET Seva - Vocational training / programmes:

- Warli Painting
- Beauty Parlour Training
- Vaccination Drives
- Paper Mache'
- Computer Literacy
- Distribution of Solar Lamps
- Jewellery Designing
- Distribution of Shudhu Tablets  
(Water purifying tablets)
- Pot Painting
- Distribution of Raincoats
- Tailoring
- Plantation Drives



MET's Institute of Management,  
Bhujbal Knowledge City, Nashik  
NAAC – Self Study Report

Understanding the needs of the tribals is of utmost importance to identify innovative and developmental opportunities for them with bringing a positive change in their lives. We believe in building responsible citizens by creating conducive environment for them to realize their talent and strength and grow in all areas.

Under MET Seva, few villages have been adopted for their holistic development through student's involvement in social upliftment programmes. People in these villages are poor because of unemployment due to lack of skills and competencies. People are idle due to absence of work to improve their financial condition. It's a vicious circle of poverty which results in poor education, poor health, poor earning capacities and migration to cities for opportunities. Women are free after their day-to-day work. Women may get some opportunities for farm labours which is not year around hence it is not sustainable.

Hence focus of this organisation is to provide vocational training and employment opportunities to rural and tribal youth and women to empower them. MET students are encouraged to take up responsibility of such projects. Students had conducted a survey to identify requirement of trained people in adjacent areas to start right vocational training programme to cater that requirement.

**Our strategy is divided into two focus areas**

**1) Life Skills Education**

Through the social businesses we are guiding, training and employing them by providing skill development opportunities and helping to get selected by the neighbouring industry or equip so as to help them to start their own business. This is already being done from 2009-10, so far 200 women are trained out of which 60% are tribal/rural and 40% are urban. Every year we are increasing the count by 35%- 50%, this trend will continue.

**2) Collaborative Development** A desired change is brought about by the supportive efforts of many dedicated and passionate individuals/institutions who demonstrate excellence in team work. Our open and collaborative culture driven by mutual respect and value for people has been the prime element to create a platform where we can unite and work for the eradication of rural poverty.

**EXAMPLE:-**

**Supporting Warli Art**

The Warlis or Varlis are an indigenous tribe or Adivasis, living in mountainous as well as coastal areas of Maharashtra-Gujarat border and surrounding areas. They have their own animistic beliefs, life, customs and traditions. The Warlis speak an unwritten Varli language which belongs to the southern zone of the Indo-Aryan languages and the union territories of Dadra and Nagar Haveli and Daman and Diu.

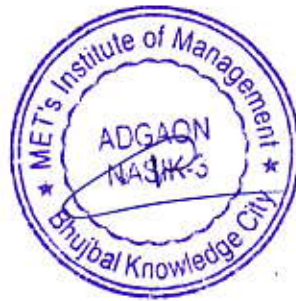


MET's Institute of Management,  
Bhujbal Knowledge City, Nashik  
NAAC – Self Study Report

The Warlis carry on a tradition stretching back to 2500 or 3000 BC. Their extremely rudimentary wall paintings use a very basic graphic vocabulary: a circle, a triangle and square. Their paintings were monosyllabic. The circle and triangle come from their observation of nature; the circle representing the sun and the moon, the triangle derived from mountains and pointed trees.

The Warli art is losing its value among the tribe itself due to modernisation and lack of resources. These artists are not earning enough to support their families, they are facing challenges for survival in the 21st century, so gradually they are diverting to other means of livelihood.

We at MET under the MET Seva are supporting such artists and trying to revive the art by giving training to the young generation mainly women. The objective is to provide them a platform to express their talent and give them opportunity to earn from their skills. The products are entirely made by them and the revenue is directly going to them. This will prevent migration of such tribal people to cities for odd jobs such as construction work, labour work, etc.



**A**  
**Report**  
**On**  
**Corporate Social Responsibility (CSR)**

**Activities**

**By**

**MET's Institute of Management,**

**2017-18**

*Mumbai Educational Trust's  
Bhujbal Knowledge City  
Adgaon, Nashik - 422003*



## Introduction

### MET- BKC SEVA, Nashik

Bhujbal Knowledge City was formed in the year 2006 under the banner of Mumbai Educational Trust. Small sapling of this Bhujbal Knowledge City has grown in to a big tree spreading over MET – BKC campus at Nashik. The Bhujbal Knowledge City is continuously spreading education in Engineering, Polytechnic, Pharmacy and Management. Students belonging to different castes and religion are taking education at this centre. Poor students are provided with financial support by the Trust. The campus undertakes various activities. Skill and Personality Development programs are also undertaken by the trust. During the span of decade, board of trustees noticed that in addition to education, students and staff should be participating in social responsibility initiative as responsible citizens of this society.

Since 2009 MET BKC has undertaken Social Development initiatives, under the guidance of Hon. Founder Chairman Chhaganrao Bhujbal, in the three adopted villages i.e. Kone, Nagosali, Goulane. Other rural areas were also covered under social responsibility and National Service Scheme of S.P. Pune University.

From such social initiative, staff and students have become more and more enthusiastic about social awareness.

#### **MET-BKC SEVA's Objectives and Approach under CSR activities:-**

- Ø To make student aware about social responsibility & social issues in the society with the involvement of institute staff
- Ø To provide assistance to the needy people in selected communities through various social initiatives.
- Ø To make empower people economically, socially & healthwise
- Ø Environment Promotion in the selected communities
- Ø To provide infrastructure facility in the communities through MET-BKC SEVA, Govt. Schemes, corporate funds etc.



## BKC-MET- Participation in Vanmohtsav- 2017

Vanmahotsav- 2017 program announced by Maharashtra Govt. to sustain environment through a mass level tree plantation. Govt. of Maharashtra aimed to plant 4 cr. Trees on this day & called NGOs, Schools, Colleges, Corporate & other institutions to participate in the program. Accordingly Institute of Management of MET-BKC participated in the program. More than 150 saplings were planted in MET-BKC Campus & surrounding.

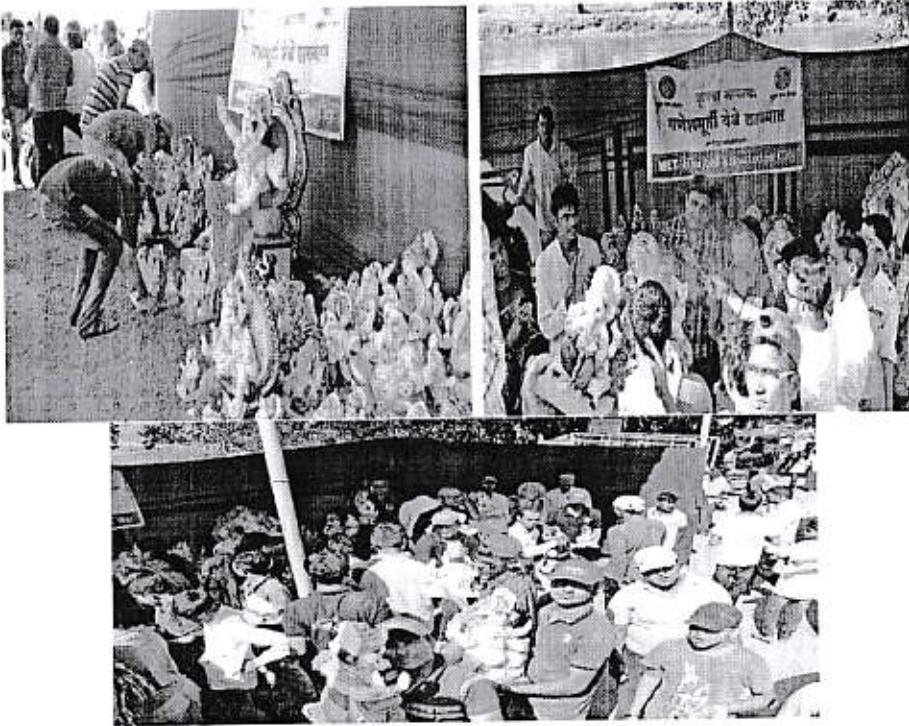


## Aadhar Card Updating camp held at MET-BKC Campus

A program was organized through SETU office of collector to provide information about ADHAR & registration of student for AADHAR Card. Aadhar Card and register mobile number is compulsory and needful for Scholarship students registration on MahaDBT portal. This activity was undertaken for smooth functioning of students getting Scholarship from the Govt. of maharashtra



## Ganesh Idol Sankalan



Ganesh Utsav is the largest festival in Maharashtra & other state. People use to go for idol Visarjan on the last day of the festival, which led to water pollution due to plaster of paris & chemical color. To avoid water pollution during Ganesh Visarjan, MET-BKC NSS & Institute of Management initiated in Ganesh idol Sanklan Program. The idol collection centre was set nearby Chopda Lawns & Gharpure Ghat of Godavari River. Collection of Ganesh Idol during Ganesh Festival to reduce Gadhavari river Water Polution. Approximately 1250 idol in Three Trucks were collected & handed over to Municipal Corporation. NSS Student & Institute of Management helped as volunteers to collect idols.





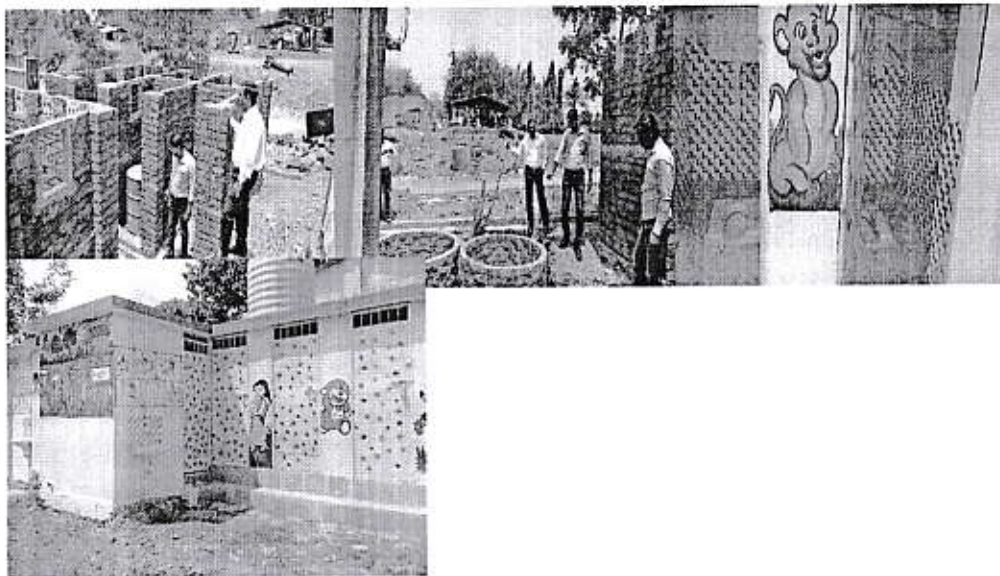
## Blood Donation Camp in MET-BKC Campus during Swa- Arpan Week.

Arpan Week celebrates to involve staff & student in social initiative organized by Institute. Part of this week Blood donation camp was organized for staff & Students. Nashik Blood Bank was specialist agency for Blood Donation. Total 102 Bags Blood collected under donation drive.



### ***“Clean Village Project” at Gaulane Village***

Gaulane village, one of the adopted villages of MET-BKC SEVA. Gaulane is deprived village in Nashik block having population of around 2500. The village High School had no proper toilet facilities. Open defecation was observed among students. This caused health issues among them. To improve the situation, MET BKC SEVA took lead in providing 10 school toilets as pilot project in the village with the help of CEAT Company. This led to improve their health. Students are happy and regularly using the toilets.



#### **Outcome of the Activity :-**

As per the Govt. policy of “Swaccha Bharat Abhiyan” toilets are constructed everywhere so that villagers can make use of it, instead of using open toilet. Schools are no exceptions. Toilets have been constructed with a view to provide privacy to the school students, especially girls.



## Tree plantation at MET Institute of Management

LOKMAT NEWS NETWORK  
NASHIK, JUL 9

A tree plantation drive was undertaken at the MET Institute of Management by Dr Nilosh Borad, students and staff members. It was part of the state mega plantation drive to plant 4 crore saplings. The insti-

tute had registered as part of the programme and the students and staff took part in the drive. Over 100 species of indigenous trees were planted and a talk or saying the environment was given by Dr Borad. The students took an oath to increase the green cover and save the environment.



Dr Nilosh Borad, students and staff members at the plantation drive.

## दिव्य मराठी

### मेट, भुजबळ नॉलेज सिटीत रक्तदान शिबिर

१०० हून अधिक  
रक्तपिशव्यांचे संकलन

प्रतिविधी | नाशिक



मेट, भुजबळ नॉलेज सिटीत राष्ट्रीय सेवा योजना व मेट कॉलेजी सेवा आणि सर्व महाविद्यालय यांच्या संयुक्त विद्यमाने रक्तदान शिबिर घेण्यात आले. त्याला संस्थेतील कर्मचारी व विद्यार्थ्यांनी मोठ्या संख्येने रक्तदान करून प्रतिसाद दिले.

रक्तदान करण्यासंदर्भात विद्यार्थ्यांना प्रबोधनपर-माहिती सांगण्यात आली. यावेळी १०० हून अधिक रक्ताच्या पिशव्या संकलित करण्यात आल्या. या कार्यक्रमास संस्थेचे विद्यार्थ्या दिलीप शिंदे, सर्व इन्स्टिट्यूटचे प्राचार्य, डॉ.

व्ही. पी. जागी, डॉ. नीलेश बेराड, डॉ. रजेंद्र नारयण, रजिस्ट्रार सुहास खेडकार, विभागाध्यक्ष तपस्य डुडत अधिकार्या महाविद्यालय सुयांकंत सोनार, सुरेश देवरे, अमोल पवार, रवींद्र भानवे व दीपक परदेशी उपस्थित होते.

लोकात नाशिक, सोमवार, दि. १६ ऑक्टोबर २०१७

### मेटसतर्फे महिला स्टाफसाठी कर्करोग तपासणी उपक्रम

लोकात म्युज केकई

नाशिक | मेट, भुजबळ नॉलेज सिटी



येथे कर्करोग तपासणी, स्त्री भुजबळ, स्त्री भुजबळ यांच्या माध्यमातून महिला कर्मचारी मेट सेवा व स्टाफ म्युजकेट अंतर्गत महिलांमध्ये ट्रेनिंग देण्यात येण्यात येणारी महिला देण्यासाठी यावेळी इन्स्टिट्यूट नॉलेज प्रॉविड डॉ. अरुण पावडेकर यांच्या संविधानीय आदर्शाने कार्यरत आले होते. या वेळी स्टाफची यांनी परीक्षा

लोकात ट्रेनिंग देण्या व सर्वोत्तमता केंद्र स्थापन पाहिजे. टिपू. यांच्यातून विद्यार्थ्यांचे हॉस्टेल प्रवर्तक वरून व त्यामुळे काही काळ अनेक समस्या या झालेले होते या वरून असावा. त्यामुळे स्टाफची परीक्षा करावी याची ही तरिकाय आहे वरून स्टाफमध्ये. त्यांच्यातून विद्यार्थ्यांच्या प्रत्येक कार्यरत व याचवेळी महिला वरती.

ही सुचना मिळी अर्जात येत यांनी महिलांमध्ये 'मेट मिनट टाइम' व इतर स्टाफातून विद्यार्थ्यांच्या वरती या विद्यार्थ्यांच्या संस्थेतून सुमारे ५० स्टाफातून महिला संविधान. (आ.प्र.)

Testimonials (Newspaper Cuttings)

